

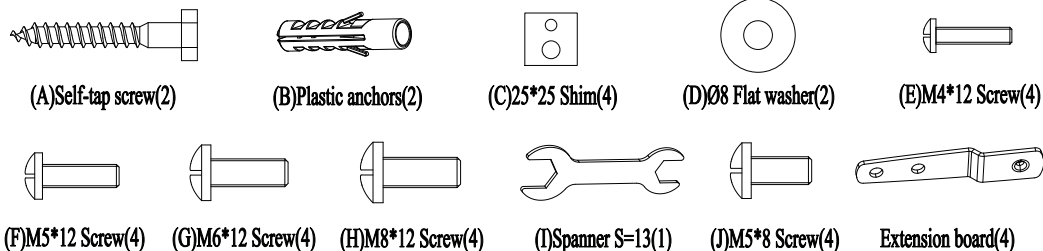
# LCD/Plasma Wall Bracket Instruction Type F-6321

## 1. Technical parameter

Weight: 1.2kg; Size of flat panel TV: 15"~32"; Maximum load: 30kg; Swing angle:  $\pm 90^\circ$  ; Pitching angle:  $+15^\circ \sim -15^\circ$  ; Distance from wall: 51~380mm.

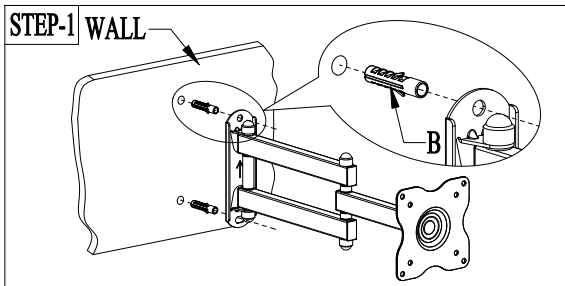
## 2. Part List

Please check the parts in the package in comparison with the following list. Make sure all of the parts are in the package. Never use defective parts. Never replace part with different specification.



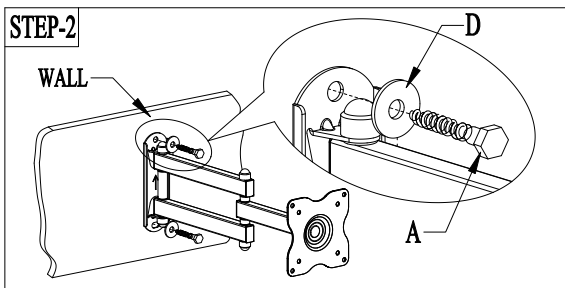
## 3. Installation and operation instructions

Note: please read the instructions carefully before installation!



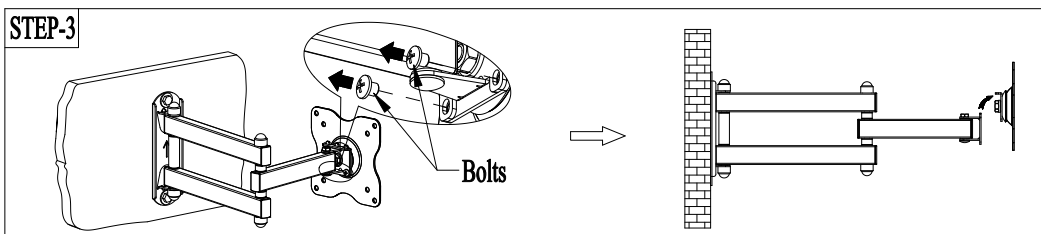
### Step 1:

Use the wall plate as a templet to drill two holes of  $\text{Ø}10\text{mm}$  diameter and 50mm depth in the vertical wall. Then wedge two plastic concrete anchors into the holes.

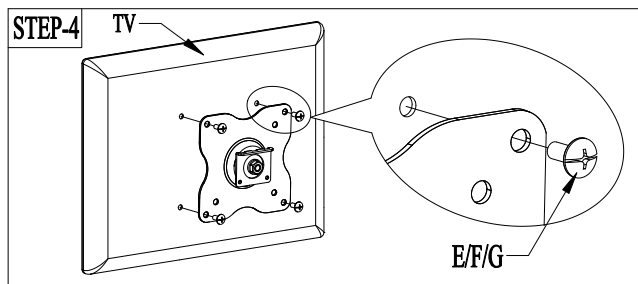


### Step 2:

Fix the wall plate with two lag bolts through the mounting holes to install the wall plate on the vertical wall firmly.

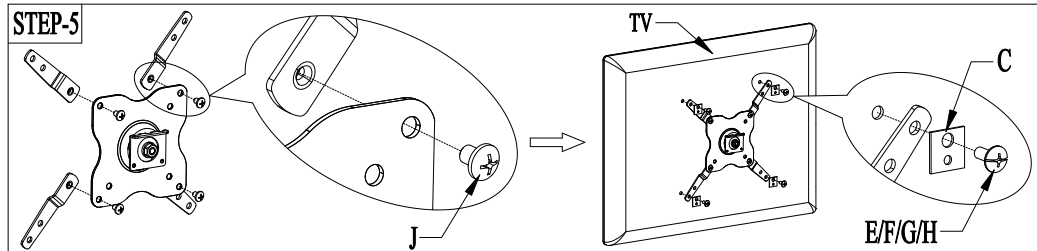


Step 3: Using the tools to loosen the two bolts under the TV plate. Lift and remove the TV plate from the wall plate.

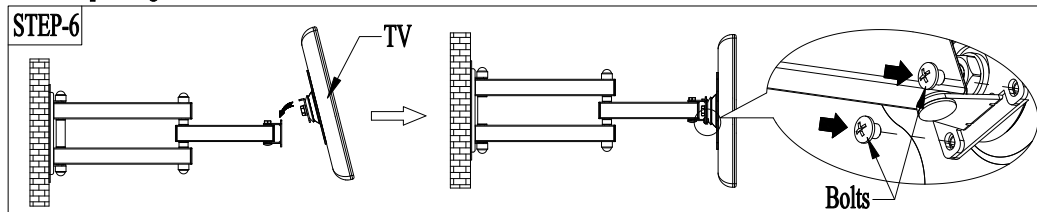


### Step 4:

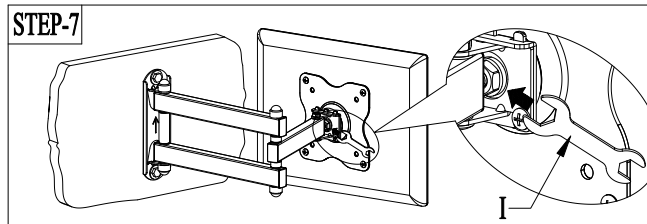
Install the panel TV on the TV fixed plate with suitable bolts selected from the parts bag. At last adjust the azimuth of the panel TV to a suitable position for watching.



Step 5: If the size of the TV plate is smaller than the size of the holes on the back of the TV, select four bolts to fix the four extension boards to a suitable location on the TV plate tightly. Screw four bolts into the thread holes on the TV back through the corresponding holes on the four extension boards.

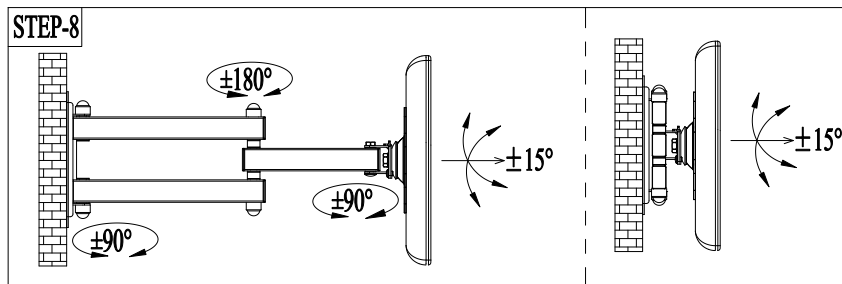


Step 6: Lift the display together with the TV plate above the wall plate, Insert the TV plate to the wall plate as shown in the fig. Then using the tools to tighten the two bolts to fix them firmly.



### Step 7:

Tension is pre-set at the factory. Some time you may loosen nut to adjust tension. Tighten the nut after moving the TV to desired location.



### Step 8:

The view angle of the display can be adjusted between in the specific range as shown in the fig.